

# HI-FINITY 179

## SLIDING DOOR

### 12 MODELS

Building Connection: Type A (Netherlands) /  
B (Belgium) / C (International)

- 2 rail, 2 vent
- 2 rail, 3 vent
- 2 rail, 4 vent
- 3 rail, 3 vent

Download:



## OPTIONS INSIDE THE MODEL

### BUILDING CONNECTION

- BE (Type B)
- NL (Type A)
- Parameters to transform BE  
(Type B) into Type C

### DIMENSIONS

- Height and width element
- Visible width frame
- Visible width vent
- Panel thickness
- Shutter roll height

### FEATURES

- Gutter

### OPENING DIRECTION

- DIN R
- DIN L

### MATERIALS

- Color inside/outside profile
- Panel material
- Shutter roll material
- Handle color

### LEVEL OF DETAIL

- Only bounding boxes

# BIM (Building Information Modelling)

REYNAERS ALUMINIUM NV/SA

Oude Liersebaan 266 • 2570 Duffel  
t +32 15 30 85 00 • f +32 15 30 86 00  
www.reynaers.com • info@reynaers.com



## GENERAL BIM REYNAERS

Using Building Information Modeling (BIM), building information can be shared between all participants like designers, architects, engineers, fabricators ...

Architects can use the Reynaers BIM models from the start of the building design, generating better visualization and window schedules with detailed info of the used elements.

The actual BIM models and families are based on 3 types of building connections.

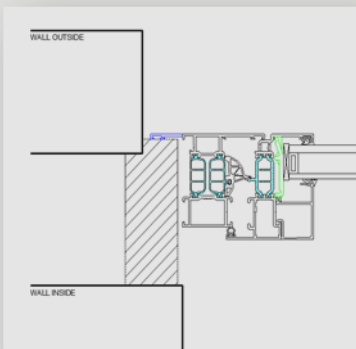
The on-line zip-files include all available configurations of the system and are available within the architect website.

## BUILDING CONNECTIONS

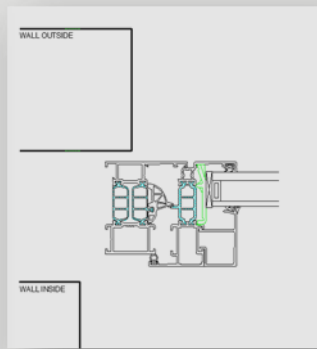
Between countries, there are differences in how a window is placed into the wall. Our BIM models are based on these differences.

- Type A : Opening wall exterior > Opening wall interior
- Type B : Opening wall exterior < Opening wall interior
- Type C : Opening wall exterior = +/- Opening wall interior

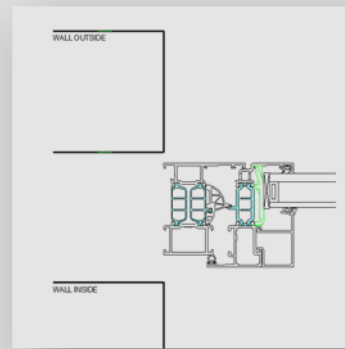
TYPE A



TYPE B



TYPE C

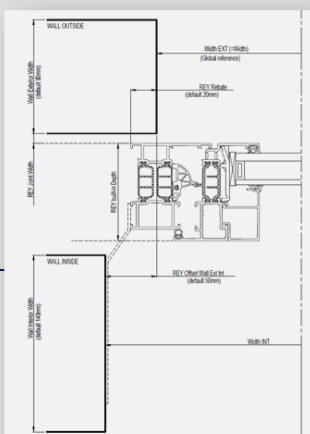


### Building connection type B in detail > main parameters :

Width EXT : opening in outside wall  
Wall exterior width : 90mm (default)

Width INT : opening in inside wall  
Wall interior width 140mm (default)

REY Rebate : distance between window and outside wall (default 20mm)  
REY Offset Wall Ext Int : distance between inside and outside wall (default 50mm)  
REY Joint Width : 5mm (default)

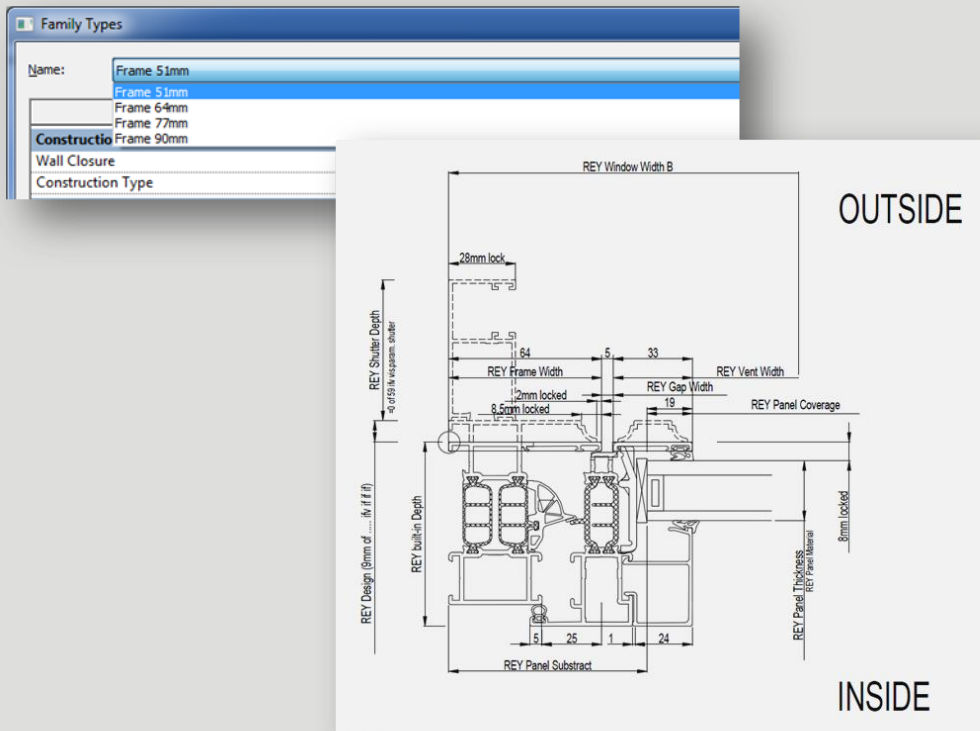


**REYNAERS MODELS (FAMILIES)**

**B\_Reynaers\_CS 77 Functional\_Window\_Inside Opening\_double\_Vent 33mm.rfa (Autodesk Revit file)**

- B : Type of building connection : Opening wall exterior < Opening wall interior
- CS 77 Functional System or sub-system name
- Window Element type
- Inside Opening Opening type
- Double Opening option (single/double)
- Vent 33mm REY Vent width (outside view)

Within each vent family, different outerframes (types within family) are available  
 REY Frame width 51-64-77-90mm (outside view)



**Design parameters**

- REY Block Frame Blockframe variant
- REY Sill Profile for hidden drainage
- REY shutter Shutter
- REY Panel Opening Direction Plan view



REY Softline  
REY Renaissance

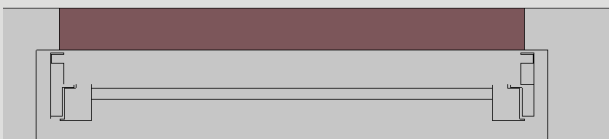
Softline variant (CS 77-So)  
Renaissance variant (CS 77-Re)



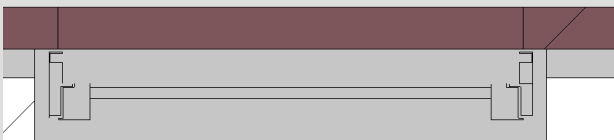
## VIEWS

### PLAN VIEW : course/medium - fine

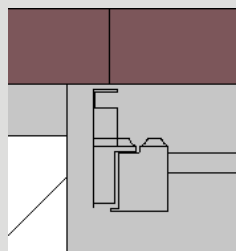
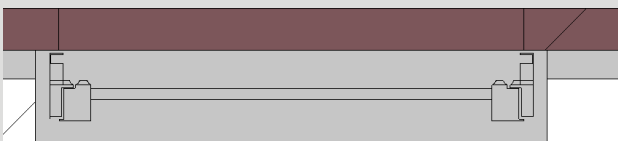
Course



medium  
+ wall details



Fine  
+ Design like softline/Renaissance



## REYNAERS TEMPLATE

The Reynaers template only consists our schedule and a limited amount of materials

### Reynaers schedule : Reynaers TOTAL

Using the Reynaers shedule "Reynaers TOTAL", you will get detailed information of all configurations used in your project. Information like element width/heighth, Frame and vent width, panel dimensions, ... can be used by the fabricator as input for Reynapro.

**REYNAERS ALUMINIUM NV/SA**

Oude Liersebaan 266 • 2570 Duffel  
 t +32 15 30 85 00 • f +32 15 30 86 00  
 www.reynaers.com • info@reynaers.com



| Family and Type                                                                  | Width EXT | Height EXT | Width INT | Height INT | REY Element Width | REY Element Height | REY Built-in Depth | REY Frame | Reynaers TOTAL |           |
|----------------------------------------------------------------------------------|-----------|------------|-----------|------------|-------------------|--------------------|--------------------|-----------|----------------|-----------|
|                                                                                  |           |            |           |            |                   |                    |                    |           | REY Vent Width | REY P. RE |
| BE_Reynaers_CS 77 Functional_Window_Inside Opening_Single_Vent 33mm: Frame 51mm  | 1000      | 1000       | 1100      | 1078       | 1040              | 1015               | 77                 | 51        | 33             |           |
| BE_Reynaers_CS 77 Functional_Window_Outside Opening_Double_Vent 76mm: Frame 26mm | 1500      | 1500       | 1600      | 1778       | 1540              | 1480               | 77                 | 26        | 76             |           |
| BE_Reynaers_CS 77 Functional_Door_Inside Opening Brush_Single: Frame 68mm        | 1100      | 2100       | 1200      | 2183       | 1140              | 2220               | 68                 | 68        | 76             |           |
| BE_Reynaers_CS 77 Functional_Door_Inside Opening Brush_Double: Frame 68mm        | 2000      | 2100       | 2100      | 2183       | 2040              | 2220               | 68                 | 68        | 76             |           |

**Reynaers materials**

The most popular RAL colours are created as Reynaers materials and can be transferred to your project or your own template:

RAL 9005, RAL 7021, RAL 7016, RAL 9010, RAL 9001 and RAL 7039